

# HiSoftware Compliance Sheriff®

**Automated Content Compliance for Privacy, Accessibility, Brand Quality and Operational Security**

## Benefits

- Comply with federal and international regulatory guidelines for best practices and risk management
- Increase your market share by making your Web site accessible to people with disabilities
- Avoid the risk of costly litigation, settlements and loss of business associated with not meeting compliance standards for accessibility and privacy
- Monitor sites for quality issues, including broken links, spelling, changed pages, and site up/down monitoring to promote the overall health of a Web site

## Comprehensive Web Content and Regulatory Governance

Ensure that your eContent compliance meets the highest standards with an automated solution that monitors every website, intranet, and portal belonging to your enterprise - all the time.

Cost-effective, complete and comprehensive - HiSoftware Compliance Sheriff provides a set of Internet content compliance modules to manage Governance, Risk Management and Compliance (GRC) to fit the way your company does business and reach every potential user with a built-in compliance solution.

Besides incorporating all the regulatory compliance rules in place, an organization's policy managers can define corporate policies in the platform, and content will automatically be monitored and validated for compliance with these policies. It provides multiple monitoring options:

- Check content when it is created
- Scan it on-demand at the request of user or administrator
- Monitor on scheduled intervals (daily, monthly, quarterly)

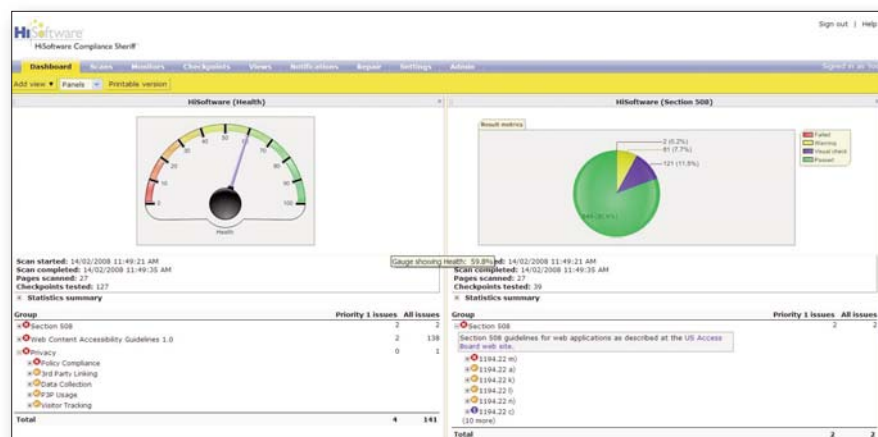
Easy-to-understand Dashboard-style reports let company leadership evaluate the full state of an organization's Web properties at any time.

## Compliance Sheriff

Offered as a HiSoftware-hosted or client-hosted subscription compliance management system, Compliance Sheriff enables organizations to easily validate their Web content and applications against standards-based and custom organizational policies for privacy, accessibility, brand quality, social media and collaboration, and operational security compliance. It allows an organization's experts and/or policy managers to define policies and provides a solution that allows developers and content managers to validate compliance with these policies.

Compliance Sheriff provides testing and reporting options for standards-based Accessibility and Privacy policies based on the current standards outlined by Section 508, Section 208, and WCAG 1.0. and 2.0 Unlike other solutions, Compliance Sheriff allows users to easily define and conduct custom tests an organization's own unique policies without costly consulting and/or programming.

Comprehensive Dashboard Reporting features allow content managers and executives to review site status with multiple reporting levels that allow developers to drill down into pass/fail details for remediation. The result is a complete and concise report on the total accessibility, quality and policy compliance of a site, or pages of a tested site, that can be shared with the various groups responsible for Web Governance.



Above: Different views can be presented in a flexible and dynamic digital dashboard, providing end users, from executive management to developers, with a platform that easily communicates the status of your website(s).

## Web-based Interface

HiSoftware Compliance Sheriff uses a Web-based interface that allows users to share the power of the solution with colleagues via the Web. Using this interface, content can be setup for scheduled reporting based on a number of preferences or content can be scanned on-demand. Compliance Sheriff's administrative features allow administrators to create users and groups with unique rights and access to reporting and application features, helping manage usage. All users can test their content against applicable standards and can benefit from comprehensive reporting.

## Hosted Solution

HiSoftware Compliance Sheriff is a browser-based solution that can be configured and used with minimal user interaction. It is available as an externally hosted solution through HiSoftware, or as a subscription that you install and host in-house on your own server. It can be scheduled to crawl and verify content daily, weekly or monthly. In addition, Compliance Sheriff can send email reports or links to the location of reports for all files verified or only those that fail compliance with the rules you choose. All reports are ready for distribution, including the "Web Ready" report that provides URL links to the files monitored and the corresponding reports, so anyone with a Web browser can view them. Compliance Sheriff can track files that reside on any server platform including: Linux, Windows, UNIX, Mac, Solaris, etc.

## Out-of-Box Compliance Standards Testing

HiSoftware Compliance Sheriff's Accessibility, Privacy and Site Quality / Brand Management options allow users to easily test for standards-based and custom factors with little configuration including:

### Accessibility Compliance

- Section 508
- WCAG 1.0 and 2.0
- Common Look and Feel (CLF)
- XML Accessibility Guidelines (XAG)
- Any standard derived from WCAG or Section 508

### Privacy Policy Compliance

Can report on a number of multi-national regulatory and compliancy standards including:

- Children's Online Privacy Act (COPPA)
- Gramm-Leach Bliley Act (GLBA)
- Health Insurance Portability and Accountability Act (HIPAA)
- California SBI 386 and AB 1950
- Safe Harbor - EU
- Section 208 - US
- Privacy Act - US
- UK Data Protection Act
- Personal Information Protection and Electronic Documents Act - Canada (PIPEDA)
- EU Data Protection Directive 1995/46
- EU Privacy and Electronic Communications Directive 2002/58

## Brand / Site Quality

This feature allows users to test for site quality issues including:

- Link Validation with Links Analysis reports/view
- Site Inventory
- Search Engine Optimization (SEO)
- Web Analytics Tag Quality report
- Spell check using both primary and user/custom dictionaries
- Offensive Language scanning
- Site Up/Down Status Monitoring
- Monitor Watch List – Receive notification of changed and modified pages

## Operational Security - OPSEC

The Operational Security (OPSEC) piece provides an integrated solution for compliance with OPSEC Guidelines and Risk Assessment Practices:

- Validate for compliance with OPSEC Standards and Guidelines
- Identify problem or exposed security areas
- Integrate Operational Security testing into your Quality Assurance and content delivery processes
- Measure and manage risk and compliance across the organization

## Custom Guideline and Policy Compliance

Most large enterprises have unique corporate guidelines. Compliance Sheriff lets users turn their guidelines into an enforceable, rules-based custom check. Create custom checks for all content including but not limited to: HTML, XHTML, SVG, XML and any other text or element based content.

## Management and Reporting

HiSoftware Compliance Sheriff provides an integrated digital Dashboard Reporting feature that incorporates streamlined report viewers and preview modes that provide an easy to understand visual report on what issues exist in the web content. The Dashboard Reporting system provides easy access to executive level summary reports so that IT managers can obtain quick status reports within the application interface. A detailed analysis for developers and quality assurance teams is a click away using the same highly customizable interface.

### Dashboard:

- Users can customize their own Dashboard to show just the results that interest them most by defining different "views" from either a single or multiple scans – without having to re-run the scan.
- Users can generate printable versions of the report summary for emailing, printing or archiving
- Views: Generate visual "reports" or views of scan results on the fly, with various options for controlling the information:
  - View results using your preferred chart type including "Health Gauge," Page Compliance, Failures by Priority, Failures by Group, Result Metrics.
  - Charts can be plotted with a time axis, to show how

your site's performance has changed over time.

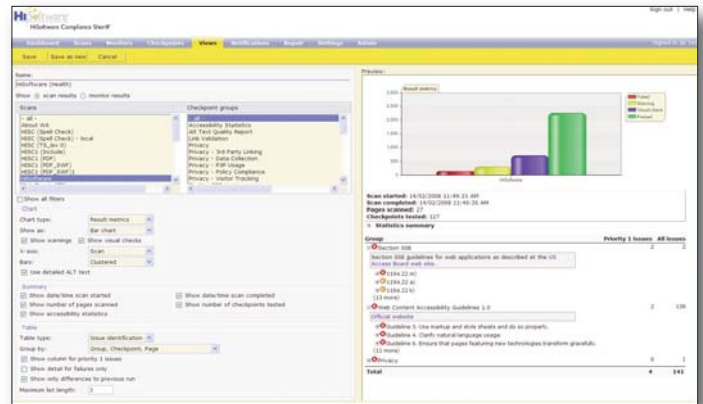
- View Statistics Summary Report to provide statistics on key elements such as Forms, Images, Scripts etc.
- Two types of tables, Page Compliance and Issue Identification, provide the ability to customize how the data is organized into various levels. A third, Links Analysis, provides a list of links identified across your website including the pages that link in and/or out of that page.
- Tables give a high level overview of your site status with the ability to quickly drill down to exactly where a specific checkpoint failed on a specific page.
- *E-mail notifications:* Email notifications can be scheduled to occur at any frequency, regardless of how often scans are run. Emails can include a whole report embedded directly within the email body so there's no need to be able to access the application.
- *Administration:* Allows administrators to define/set permissions per group (of Users), such as whether a group can Edit or View one or multiple scans, views or checkpoints. Ability to check current licenses and usage – such as the number of Users and Scans defined and your consumption count. This feature allows the user to see their level of activity over time and allows administrators to manage licenses and consumption.

## Custom Checkpoint Editor

In addition to universal compliance standards many organizations have their own unique custom policy requirements. HiSoftware Compliance Sheriff includes a Custom Checkpoint Editor which allows users to easily define and validate against accessibility, privacy, site quality and other custom checks that are required by your organization.

This extends the validation system provided in HiSoftware Compliance Sheriff to meet any specific need not covered by a publicly available standard or guideline. Test features, formats and customization can be pre-configured in HiSoftware Compliance Sheriff by an organization's experts and/or policy managers so that developers, quality assurance professionals and other content creators within the organization can simply run these programmatic tests and receive a result, without any requirement for software configuration. HiSoftware Compliance Sheriff's Custom Checkpoint Editor allows you to:

- View and edit the definition of each checkpoint from within the same application, so that out-of-the-box checkpoints can easily be tailored to meet each customer's needs.
- Configure almost infinitely complex checkpoint rules. For instance, a checkpoint can check for certain elements with certain attribute values but only on pages that contain particular text, or only on pages whose URLs match particular criteria.
- Perform sophisticated pattern matching in checkpoint rules, to enable looking for very particular key pieces of data (e.g. credit card numbers, or input fields that appear to be asking for a user's real name, as opposed to a screen name or nickname).
- Groups and Sub-Groups allow for easier administration



Above left: Reports are constructed using Views based on one or more scans. Apply appropriate filters to display the desired content of the report and the type of chart presented.

and management of checkpoints. For example, a checkpoint group assigned to a Scan definition can be easily changed by adding or removing a Subgroup that contains several checkpoints, instead of individually adding/removing several checkpoints.

## Scans - Web Application Testing

Defining a scan has never been simpler. A single scan definition can contain one or more domains, eliminating the need to run multiple scans for a single site. For example, by default, links to pages that reside on a different domain will be skipped; however, such domains can be added to the scan. You can even use the Include/Exclude filters to target specific pages in the additional domains, rather than crawling/scanning the entire domain.

## Overview of Main Testing Features:

- Ability to bundle multiple domains into a single scan (as described above).
- Ability to schedule scans to run at any specified frequency e.g. every 2 weeks, every 3 months, on the last Sunday of each month, etc.
- Ability to record a transaction script on the spot while configuring a scan using the integrated Transaction Script Recorder. This enables the user to fill out forms in their application (including authentication forms), and even proceed through a complex transaction like purchasing an item and have the scan “replay” these actions when it runs, automatically testing all the pages shown during the interaction. The Transaction Script Recorder allows Compliance Sheriff to simulate a user interacting with a transactional Web-based application (e.g. time and attendance system, resource management system, airline reservation system, online banking system) and incorporate accessibility, privacy and content quality testing into the interaction process.
- The scanning engine can automatically follow almost all types of links on a page, including those embedded inside JavaScript code. For links that can't be followed automatically (e.g. login screens, URL's constructed dynamically using JavaScript and submit forms), a transaction script can be used.
- Ability to rename/re-label scans without losing previous

definitions or results.

- Ability to schedule monitors that can be run automatically at regular intervals (minutes, hours, days, weeks, months). Monitors allow you to verify the quality of your website (site up/down, if pages or any of its resources have changed, identify slow pages) and send alerts based on the result of these tests and/or produce a report showing a history of the results.
- Microsoft Office® and Adobe® documents (.DOC, DOCX, .XLS, XLSX, .PPT, PPTX, .PDF, .SWF and .MSG) can be validated for any compliance regulation that is part of Compliance Sheriff, including custom rules.
- Check for errors that occur in Cascading Style Sheets (CSS) and Accessible Rich Internet Applications (ARIA) markup. Easily specify what content is being used for decorative or purely presentation purposes in content.
- For areas where manual verification is required, the Compliance Sheriff Results Revision Wizard will easily enable an audit trail to be created that allows content reviewers to pass or fail content and provide justification for doing so that can be included in reports.

## Tracking

Compliance Sheriff can track every file no matter what platform the Web server might be. It can generate reports for all files or just the files that fail programmatic checkpoints. It can email the reports to the person responsible for repairing the file, publish the reports on a network or the Internet, and create unique "executive summary" reports.

- When presented with a list of line numbers/position numbers in a page where a problem was found, you have the ability to click on that link and have the application show you the source HTML with the problem highlighted.
- For pages that are tested via a transaction script, not only is content that is generated dynamically within the browser also tested, but because the application captures and saves a copy of the HTML, the application can still highlight the problem in the HTML as it existed at the time, making it simple for developers to trace the problem to the original source code.

## Does your organization use Microsoft SharePoint?

The HiSoftware Compliance Sheriff for SharePoint Enterprise Platform gives organizations an easy, cost-effective way to successfully develop and maintain best-of-breed Websites that promote and enforce the highest standards in SharePoint Governance. Check out the HiSoftware difference in Microsoft SharePoint Compliance [www.hisoftware.com/MOSS/MOSSsolutions.html](http://www.hisoftware.com/MOSS/MOSSsolutions.html).

## Requirements

### Client Browser

- Internet Explorer® version 6.0/7.0/8.0
- Mozilla Firefox® 2.0, 3.5 except for Transaction Path Recording and Local File Scanning
- Microsoft Windows® XP, 2000+, Windows Vista™, Windows 7

### Client HiSoftware Toolbar

- Internet Explorer version 6.0/7.0/8.0
- Microsoft .NET® Framework 2.0
- At least 1GB RAM and 2GB free disk space to run local scans

### Other File Format Support

- Microsoft Office® 2003 (required to scan Microsoft Word®, Excel®, Powerpoint®), Office 2007 and Adobe® PDF)

### Server Requirements

- Microsoft Windows 2000/2003/2008 Server
- Internet Information sever 5.1 or greater
- Microsoft .NET Framework 2.0
- Windows Task Scheduler
- Microsoft SQL® Server 2000/2003/2008
- 2GB RAM or greater
- At least 5GB free disk space



### Corporate Headquarters

9 Trafalgar Square

Nashua, NH 03063 USA

**Tel** 888.272.2484 (U.S. & Canada)

+1.603.578.1870

**Fax** +1.603.578.1876

**Email** [info@hisoftware.com](mailto:info@hisoftware.com)

[www.hisoftware.com](http://www.hisoftware.com)

© Copyright 2010 by HiSoftware Inc. All rights reserved. HiSoftware and HiSoftware Compliance Sheriff are registered trademarks of HiSoftware Inc. Any and all other product and company names mentioned herein are the trademarks or service marks of their respective owners.